

# MONTHLY MEMBERSHIP PROGRESS REPORT

LOCATION ONTARIO

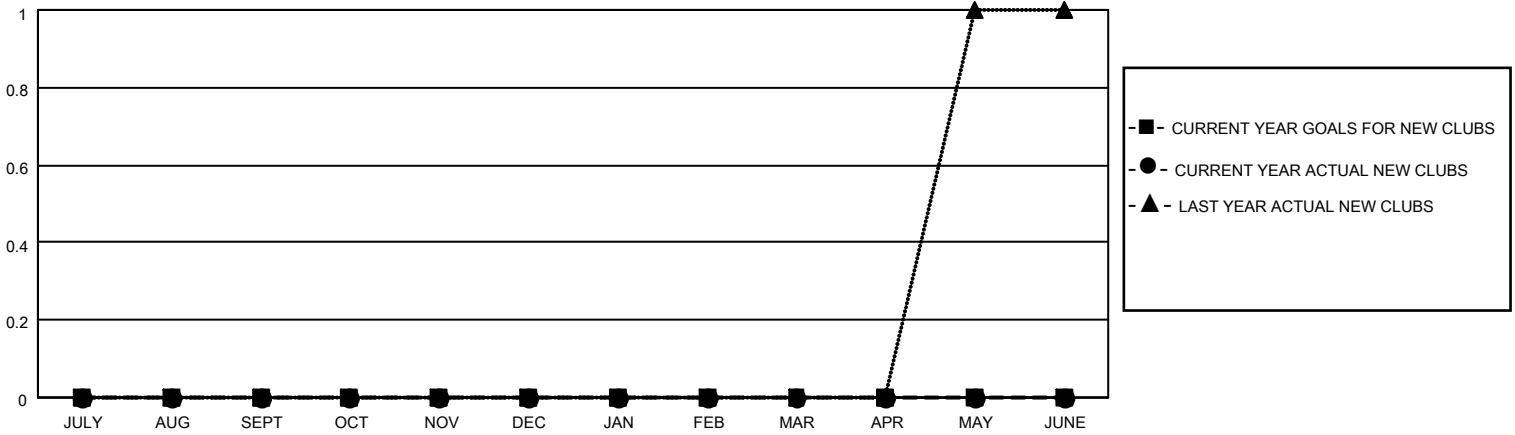
District A 4

Results as of: 5/31/2022

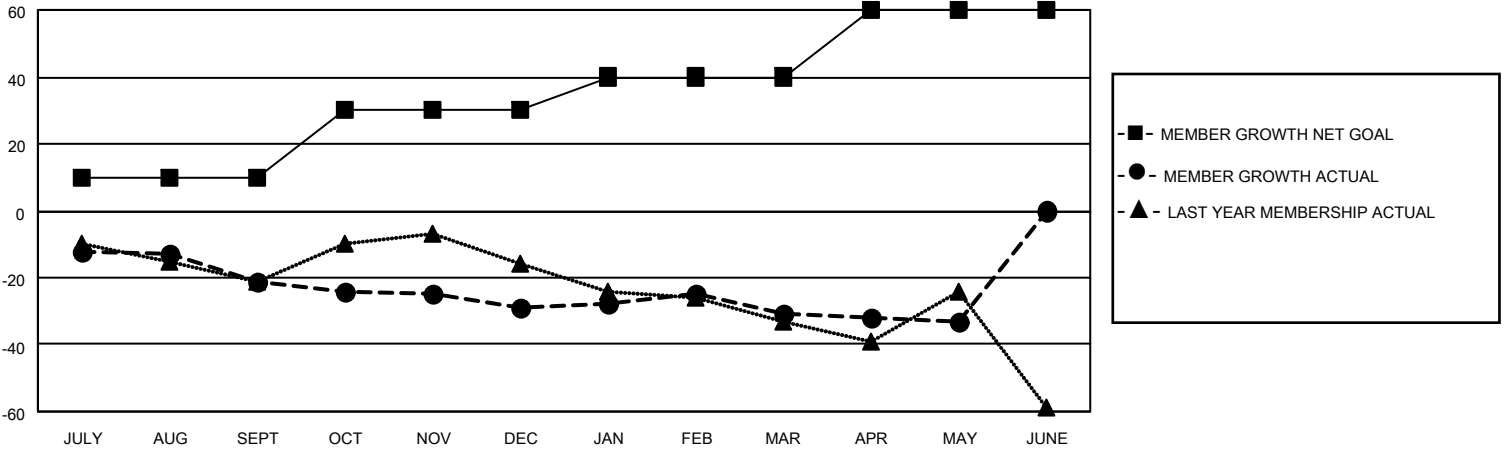
Clubs			
RESULTS FOR 2021-2022			
QUARTER	NEW CLUB GOAL	NEW CLUBS	DROPPED CLUBS
JULY/AUG/SEPT	0	0	0
OCT/NOV/DEC	0	0	0
JAN/FEB/MAR	0	0	0
APR/MAY/JUNE	0	0	0

Members			
RESULTS FOR 2021-2022			
QUARTER	MEMBER GROWTH NET GOAL	MEMBER GROWTH ACTUAL	DROPPED MEMBERS ACTUAL (including transfers)
JULY/AUG/SEPT	10	14	28
OCT/NOV/DEC	20	39	41
JAN/FEB/MAR	10	30	27
APR/MAY/JUNE	20	22	22

**GOALS AND ACTUAL NEW CLUBS CUMULATIVE**



**GOALS AND ACTUAL MEMBERS CUMULATIVE**



**DROPPED CLUBS: 0**

**29 CLUBS OF 62 ADDED 1 OR MORE NEW MEMBERS**

**GENDER DISTRIBUTION**

MALE	933 (71.66%)
FEMALE	369 (28.34%)
NON BINARY	0 (0.00%)
PREFER NOT TO ANSWER	0 (0.00%)

**DROPPED MEMBERS**

[CLICK HERE FOR CUMULATIVE MEMBERSHIP DATA](#)

DECEASED	31
CLUB CANCELLED	0
OTHER	87
<b>TOTAL</b>	<b>118</b>

TOTAL FAMILY UNIT MEMBERS	170
FAMILY MEMBERS PAYING HALF DUES	87